

Measuring slides series 1528, Movement 20 mm

Various variants allow either outer or inner measurements, probing with spring load or pneumatic. The standard spring load is 1 N. It can be increased or reduced correspondingly by fitting different springs. Please advise the required spring load on your order.

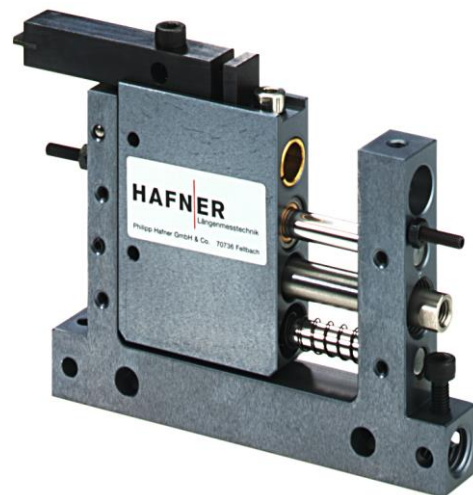
By measuring with cylinder load, the measuring load is 7 N with 4 bar. The total movement is 20 mm (measuring range depending on probe!). Adapter nipple and pneumatic hose are contained in the delivery scope. The clamp shank diameter for probes is \varnothing 8H7, the fitting position is optional. Adjustable headless screws limit the movement.

The free from float run is guaranteed by two precision ball guidances. According to geometry of probing, the repeatability is between 0,1 and 0,4 μ m.

We also provide accompanying measuring levers (see page 15) and inductive probes (see page 35).

Product features

- Large index arm overhang through stable ball guidance possible
- Large lifting of index arm (up to 20 mm) without exceeding the inductive probe
- Fitting position is optional. Adjustable limit stops limit the movement
- Measuring load alternatively with cylinder load (4bar = 7N) or spring load (standard 1N)
- Clamp shank diameter for the probe is \varnothing 8H7
- Protection of the inductive probes
- Measuring slides may be fixed as ordinary by means of a fitted bore hole or screws
- Various mounting variants for inaccessible positions
- Feeding also with different measuring direction at the same side
- Base produced out of aluminum
- High endurance

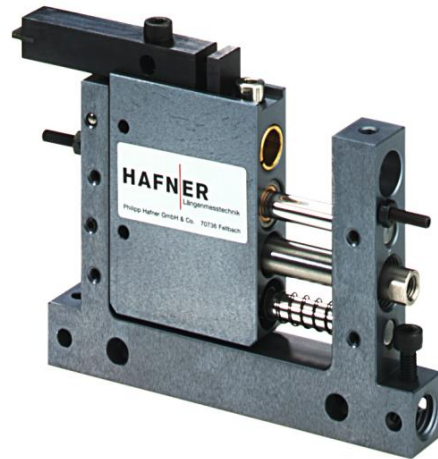
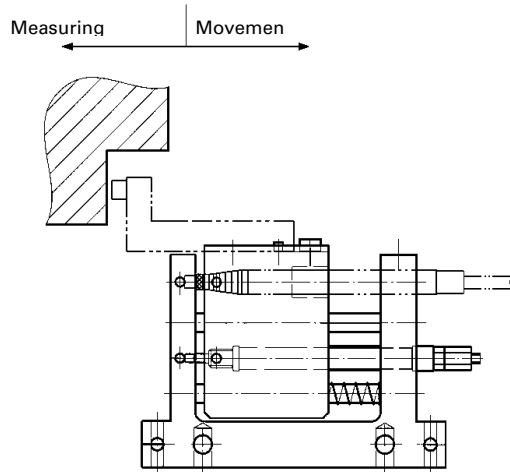


Measuring slide



Examples for field of application

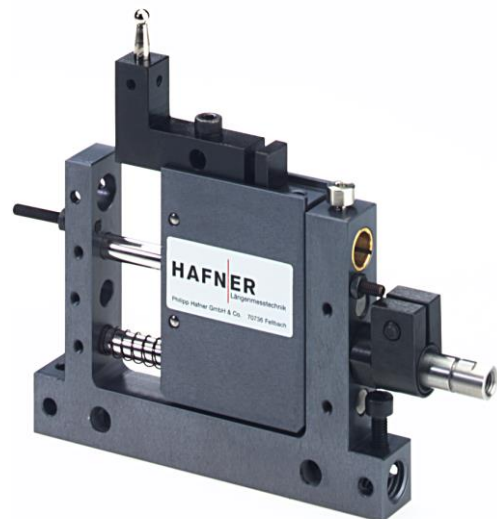
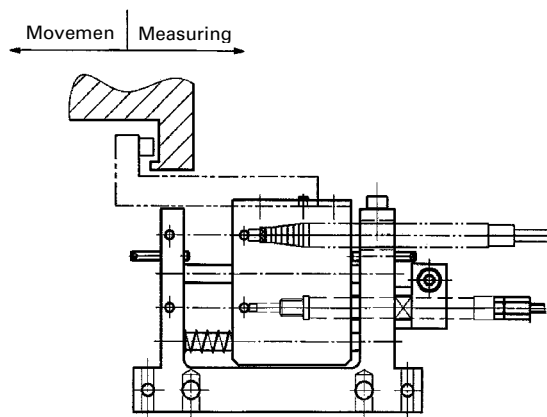
Measuring slides for outer measurement



Measuring slides for outer measurement (overview)

Type	Mode of action	Article-No.
AF 20 P	Measurement with spring load / lifting pneum.	152831.1
AP 20 F	Measurement with cylinder load / lifting by spring	152833.1
AF 20	Measurement with spring load / without lifting	152835.1

Measuring slides for inner measurement



Measuring slides for inner measurement (overview)

Type	Mode of action	Article-No.
IF 20 P	Measurement with spring load / lifting pneum.	152832.1
IP 20 F	Measurement with cylinder load / lifting by spring	152834.1
IF 20	Measurement with spring load / without lifting	152836.1

Examples for field of application (continuation)

Functioning

The probe (e.g. inductive probe) will be fixed by means of a clamp either in the movable middle part (for outer measurements) or on the frame of the u-shape outer part of the measuring slide (for inner measurements). The part to be measured will be touched by means of a measuring lever, which is fixed on the measuring slide. The probe (probe or dial gauge) is put either at the lateral pin on the frame of the u-shape outer part (for outer measurements) or at the lateral pin in the movable middle part of the measuring slide (for inner measurements).

Additional information

Principle according to Abbe

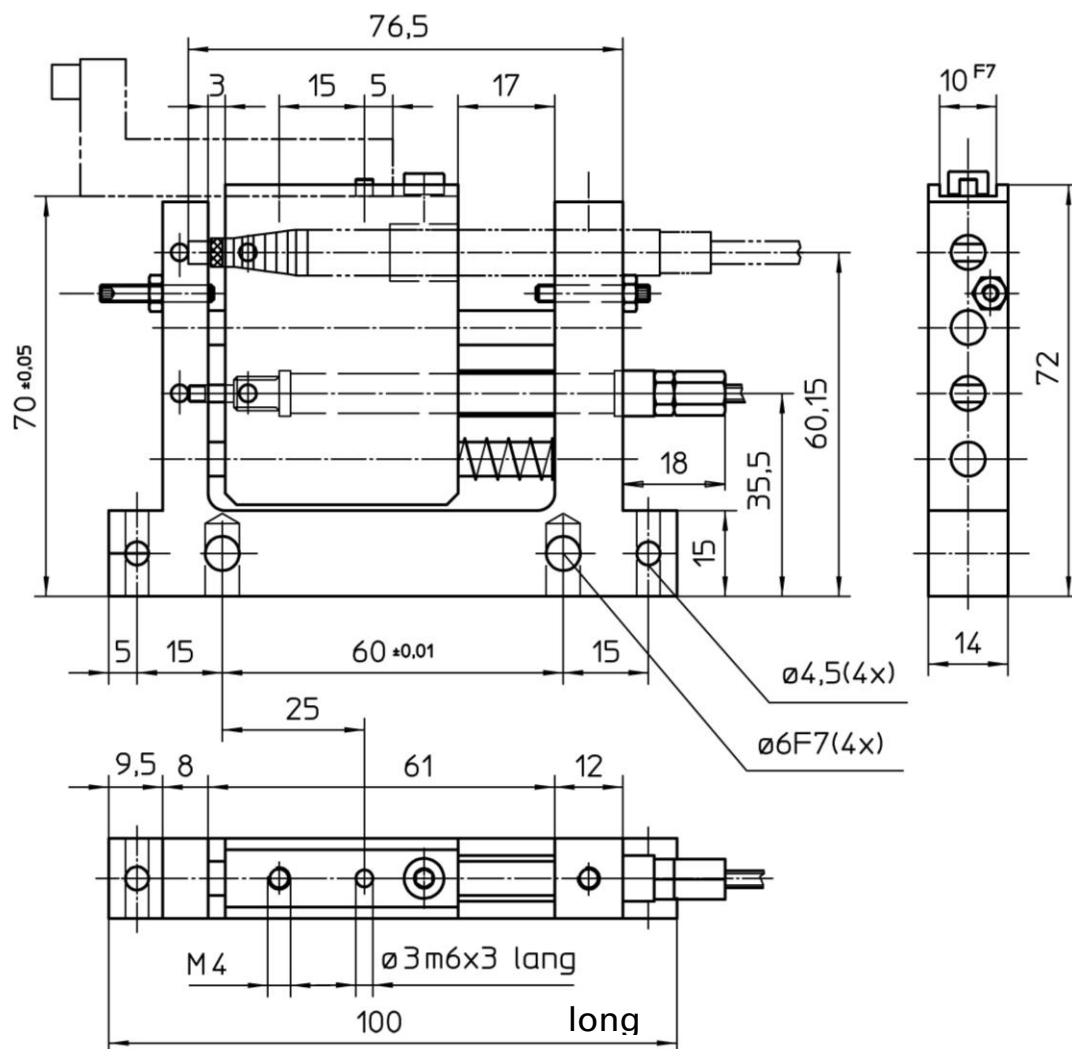
The distance to be measured at the part to be measured and the distance to be compared with at the measuring body in the measuring direction should be arranged in true alignment.

Measuring slides mov. 20 mm AF 20 P for outer measurements

Article-No. 152831.1

Product features

- Measurement with spring load ($F = 1 \text{ N}$)
- Lifting by means of a pneumatic cylinder (4 bar = 7 N) with horizontal mounting
- Supplies for pneumatic connection: 2 screwed connections M5, 1m flexo hose
- Probe will be free when lifting



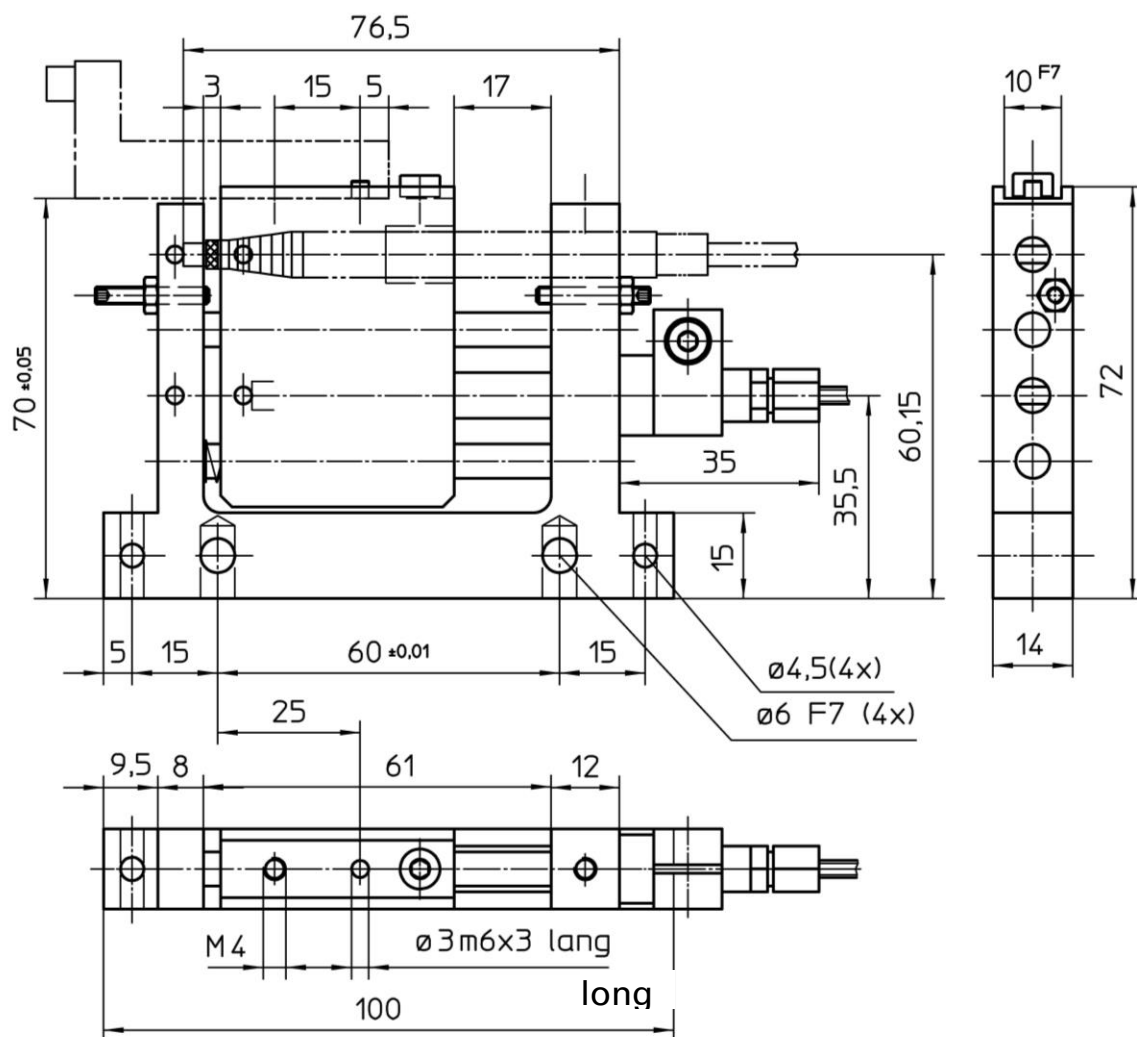
Measuring slides are represented in measuring position.

Measuring slides mov. 20 mm AP 20 F for outer measurements

Article-No. 152833.1

Product features

- Lifting with spring load ($F = 1 \text{ N}$)
- Measurement with pneumatic (4 bar = 7 N) with horizontal mounting
- Supplies for pneumatic connection: 2 screwed connections M5, 1m flexo hose
- Probe will be free when lifting



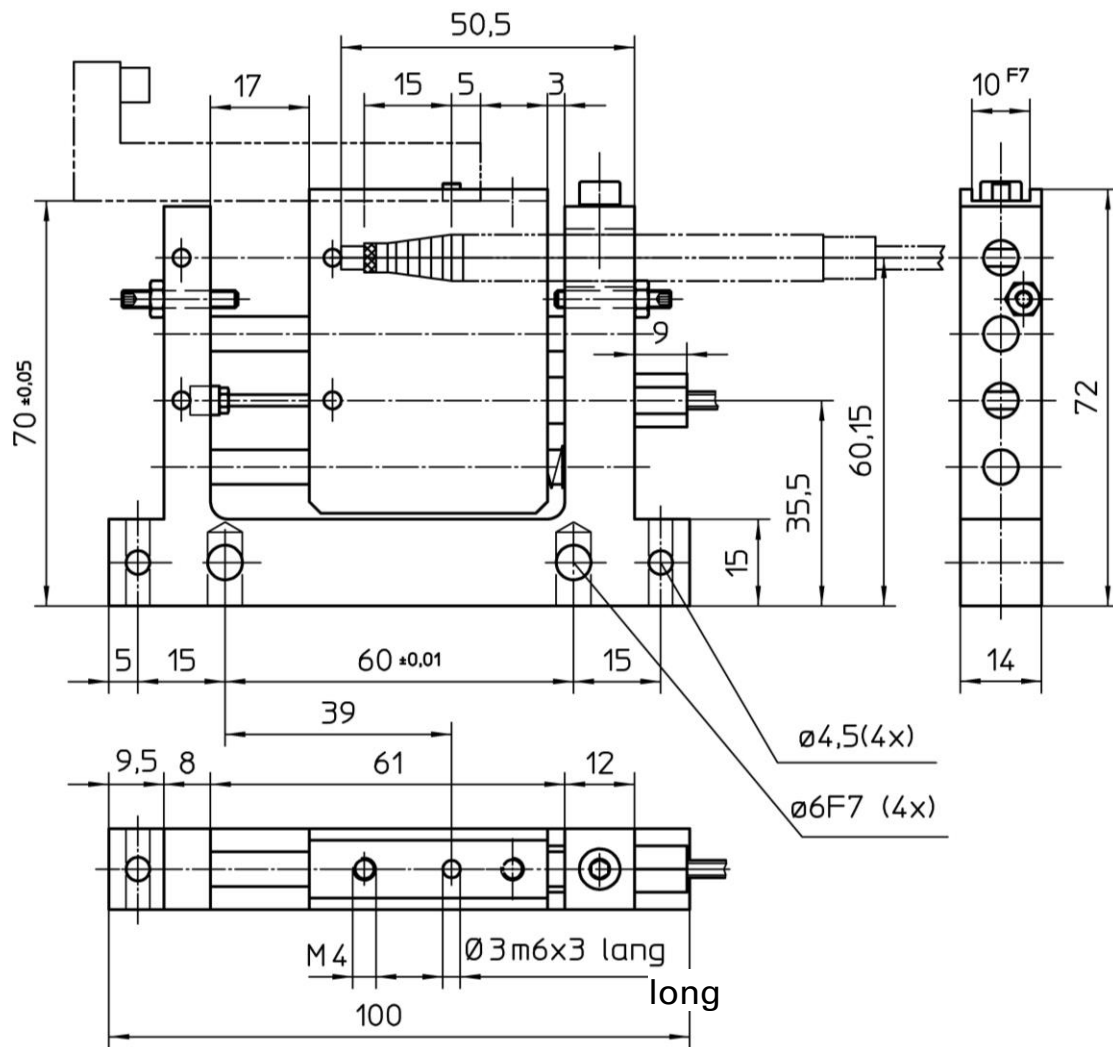
Measuring slides are represented in measuring position.

Measuring slides mov. 20 mm IP 20 F for inner measurements

Article-Nr. 152834.1

Product features

- Lifting with spring load ($F = 1 \text{ N}$)
- Measurement with pneumatic (4 bar = 7 N) with horizontal mounting
- Supplies for pneumatic connection: 2 screwed connections M5, 1m flexo hose
- Probe will be free when lifting



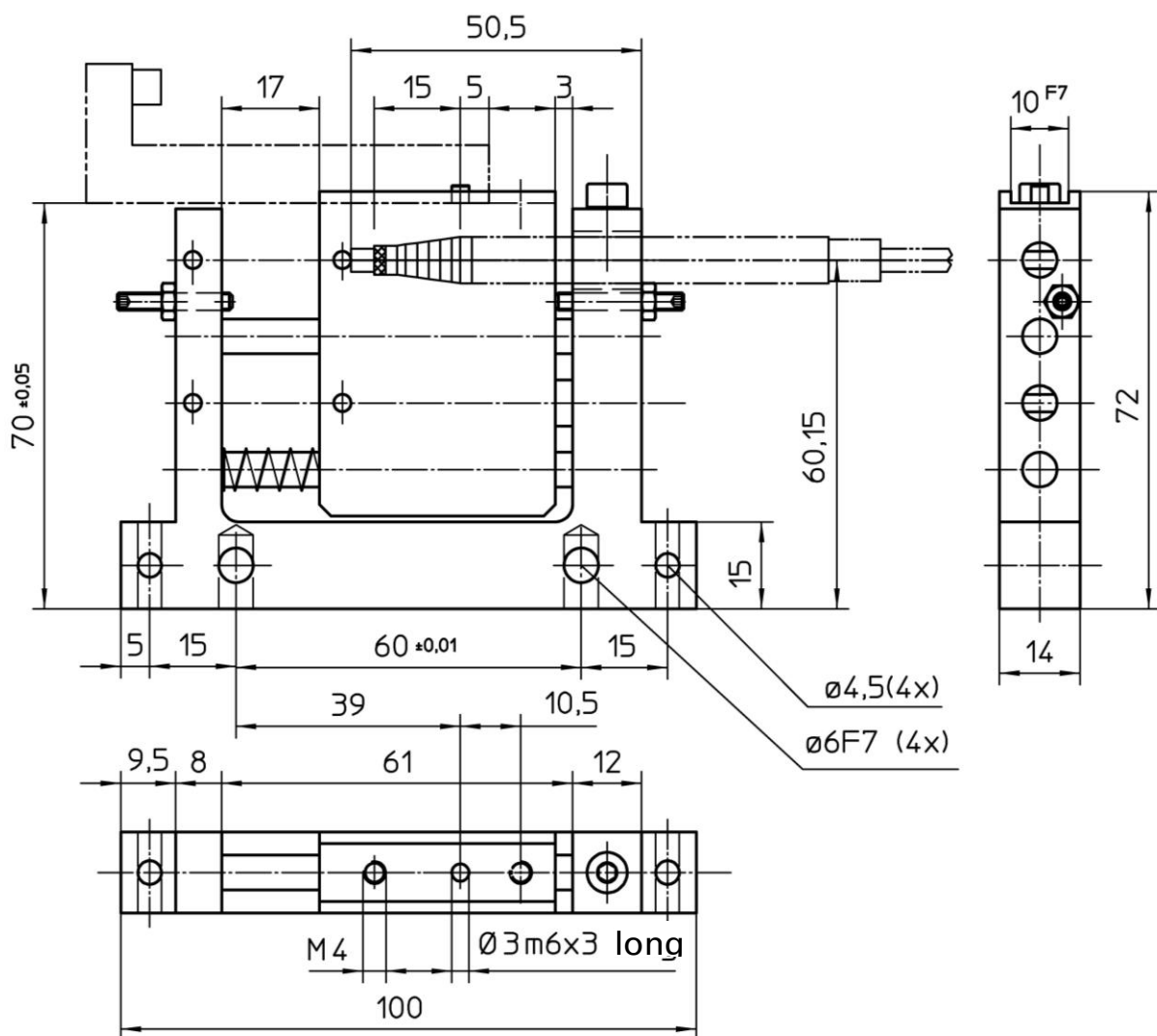
Measuring slides are represented in measuring position.

Measuring slides mov. 20 mm IF 20 for inner measurements

Article-Nr. 152836.1

Product features

- Measurement only with spring load ($F = 1\text{ N}$)
- No return movement (without pneumatic cylinder)
- Part to be measured is put against measuring slide



Measuring slides are represented in measuring position.