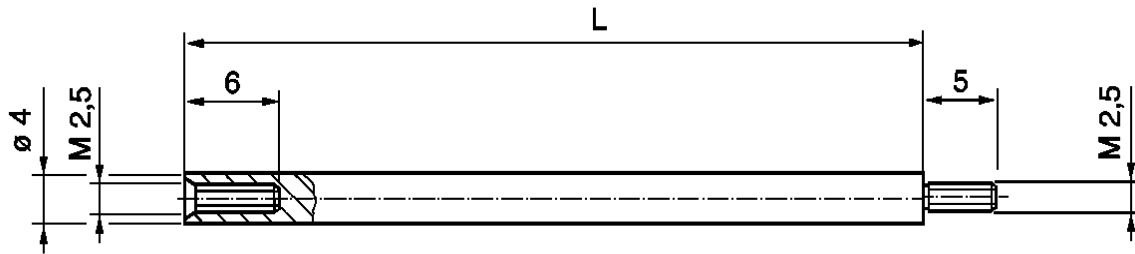


Rod extensions



Length	Article-No.
10	1131 001 10
15	1131 001 15
20	1131 001 20
30	1131 001 30
40	1131 001 40
50	1131 001 50
60	1131 001 60
70	1131 001 70
80	1131 001 80
90	1131 001 90
100	1131 001 100

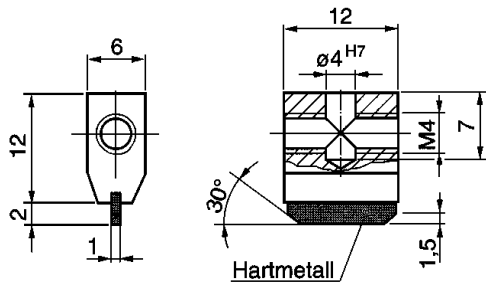
Product features

Suitable to prolongate the rods from dial gauges, precision measuring indicators and probes

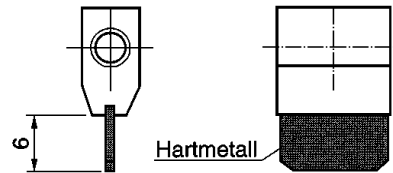
Inserts with hard alloy (HM)

Product features

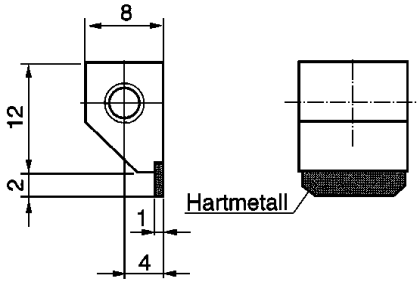
Suitable to clamp on rod extensions or extension insertions with $\varnothing 4$ mm – type P



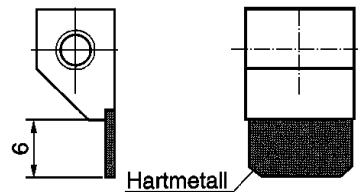
Article-No. 1131 500



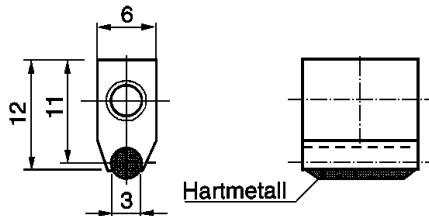
Article-No. 1131 501



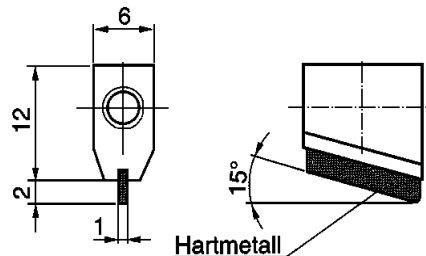
Article-No. 1131 510



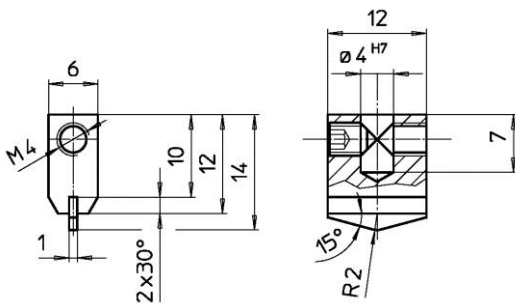
Article-No. 1131 511



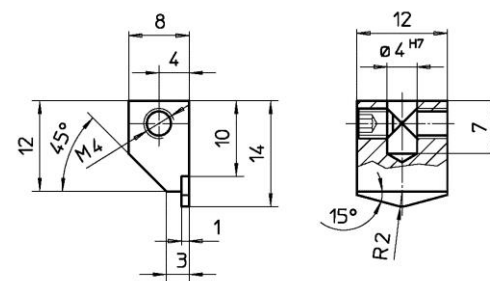
Article-No. 1131 520



Article-No. 1131 530



Article-No. 1131 540



Article-No. 1131 543