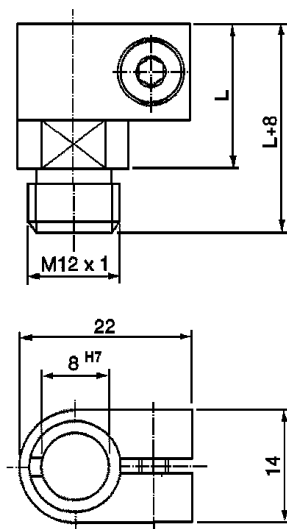


Holders for dial indicator series 1155



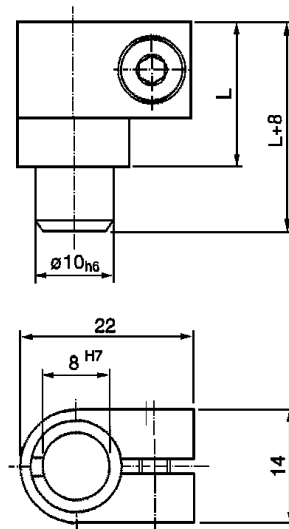
Holders for dial indicator, inserts, clamping elements

Version to screw in



Length L	Article-No.
18	1155 01
25	1155 02
50	1155 10
75	1155 11
100	1155 12

Version to paste



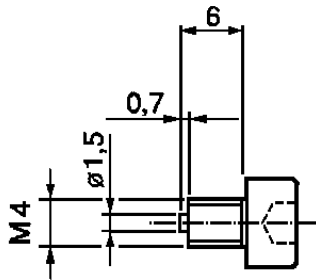
Length L	Article-No.
18	1155 06
25	1155 07

Product features

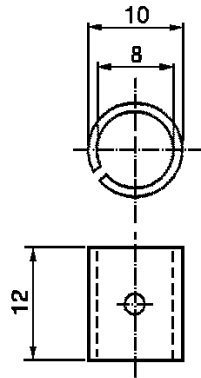
These holders for dial indicator are suitable for precision measuring indicators, extensions, angular heads and inductive probes with extension diameter 8 mm (special lengths on request).

Clamping elements

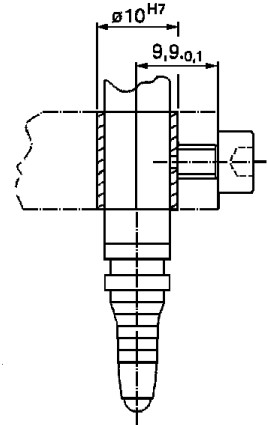
Clamping elements for probes with extension diameter 8 mm (other lengths on request)



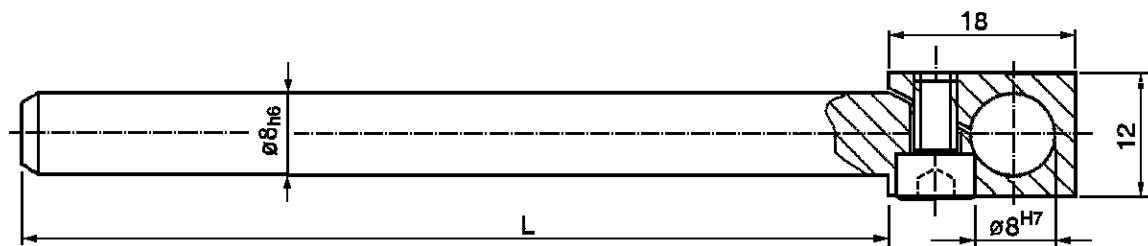
Clamping bolt
Article-No. 1155 31



Sleeve
Article-No. 1155 30



Screw-in regulation



Clamping element

(depth 10 mm)

Length L	Article-No.
25	1155 35 025
50	1155 35 050
60	1155 35 060
75	1155 35 075
85	1155 35 085
100	1155 35 100
110	1155 35 110
150	1155 35 150
200	1155 35 200

Product features

- More flexibility when fixing the probes
- For probes with extension diameter 8 mm